



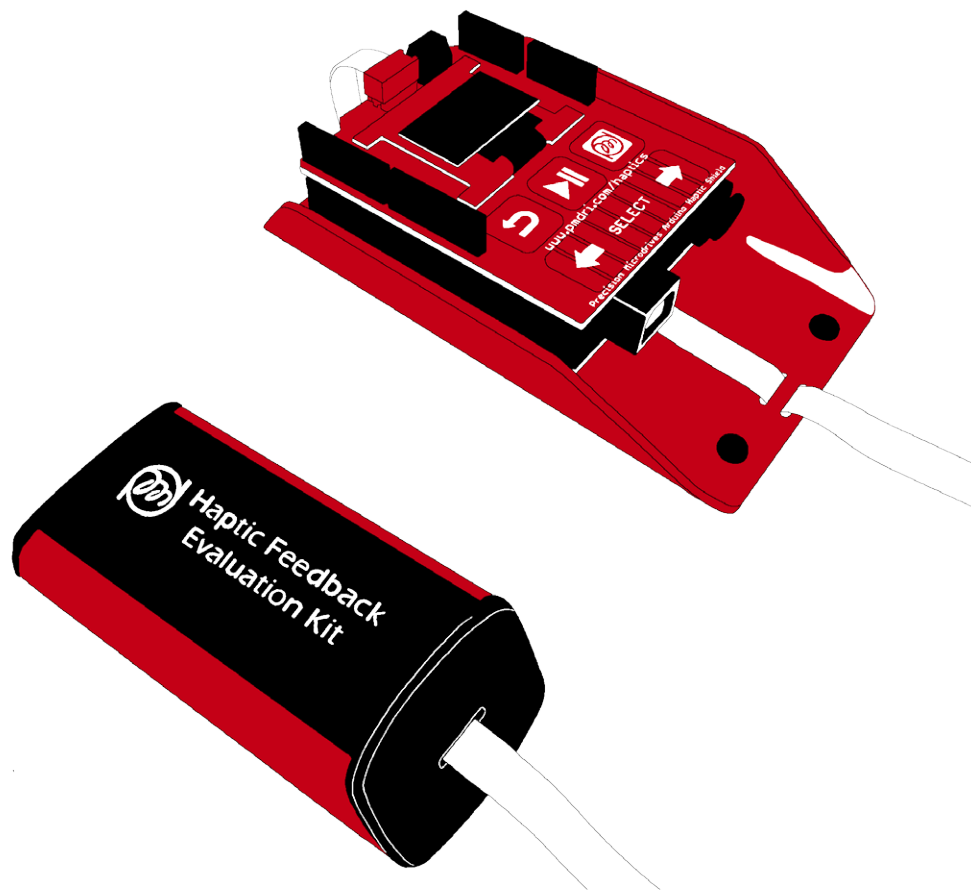
**PRECISION
MICRODRIVES**™

enquiries@precisionmicrodrives.com

www.precisionmicrodrives.com

+44 (0) 1932 252 482

Specialists in the supply and engineering of miniature DC motors



You can request technical assistance from our engineers by [clicking here](#)

Haptic Feedback Evaluation Kit

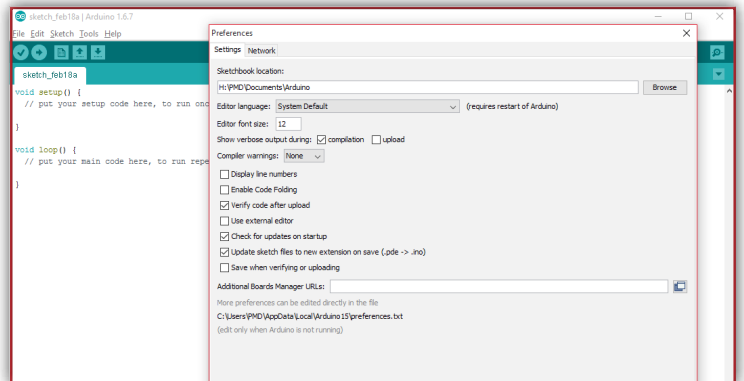
How to Update Arduino Libraries

1 Introduction

This quick guide shows you how to install the additional Arduino libraries for The Haptic Feedback Evaluation Kit! Whether you are upgrading from a previous version of the kit or this is your first time using it, to change the Mode of Operation to the Engineering Mode (or return to the Intro Mode) requires you to install the packaged libraries.

The processes are very similar, but please note these libraries are for the Rev2 version of the Haptic Feedback Evaluation Kit (pictured below). If you are unsure what version of the kit you have, you can check at precisionmicrodrives.com.

Before starting, please make a note of your 'sketchbook location'. You can find this by opening the Preferences dialogue (File -> Preferences or Ctrl + Comma) in the Arduino IDE. Your sketchbook location is given at the top. **It is recommended** that your sketchbook location is different from both the Arduino IDE installation path and the folder of the sketch you are using. Something like C:\users\...\Arduino\ is perfect!



Find Your Sketchbook Location



2 Installing the Libraries

Bundled in the Mode of Operation zip file that you have downloaded from precisionmicrodrives.com are the required libraries. In short, these must be copied to your sketchbook location before opening the Arduino IDE.

Step 1 Extract Zip File

After downloading the zip file, extract it to a safe location. Do not use the same path as the Arduino IDE installation or the same path as your Arduino sketchbook. The zip file should unpack two folders, one called 'HFEKLibraries' and one that matches the name of the Mode of Operation, e.g. 'EngineeringMode'.

Within the *HFEKLibraries* folder there are 4 sub-folders, each of these is a 'library' containing a *.h and a *.c file. These 4 folders are what we will copy to the sketchbook location.

Step 2 Remove Existing Libraries

This step is for users upgrading from Rev1 only or those experiencing errors when compiling.

Take note of the 4 sub-folders in the *HFEKLibraries* folder; *i2c*, *Metro*, *MPR121*, *SSD1306*. Navigate to your sketchbook location and open the folder titled 'libraries', delete any existing versions of the 4 *HFEKLibraries* that you find.

Step 3 Copy Libraries to Sketchbook

Select the 4 sub-folders (not the individual *.c and *.h files) and copy them to the *libraries* folder in your sketchbook location.

If you are prompted that the same files already exist in the destination folder, **select to overwrite the files** to ensure you have the latest versions. If you are in doubt, you can delete the folders as explained in Step 2.

Step 4 Open Your Sketch (*.ino)

You can now open your downloaded sketch, if the libraries are installed correctly you should now be able to compile without errors.

If you have any issues, [please contact our technical support using this link](#). In order to help diagnose your problems, please include the following information:

- Arduino IDE version
- Path of sketch, sketchbook location, and Arduino IDE installation path
- If you have used any version of the Haptic Feedback Evaluation Kit before